

SINGLE STRAND DRAG CONVEYOR (MODEL 716 is a Dual Strand Drag)

1700 Division Street, New London, WI 54961

Phone: (920) 982-4030; Fax: (920) 982-6800

Website: www.nleco.com

This tough, abrasion-resistant conveyor features replaceable bottom pans and drag flights. These units are designed to drag very small fines, chips, turnings or granulated scrap.

Widths: 6", 8", 10" and 12"

Curves: 30°, 45°, and 60°

Lengths: Up to 20'

Standard Speed: 20 FPM

Standard Motor: ½ HP 230/460/3/60 TEFC

Standard Drive: Top Mount, Right Side

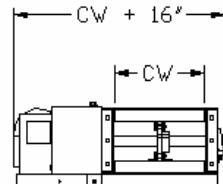
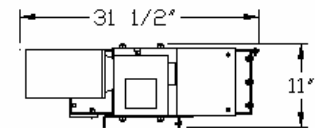
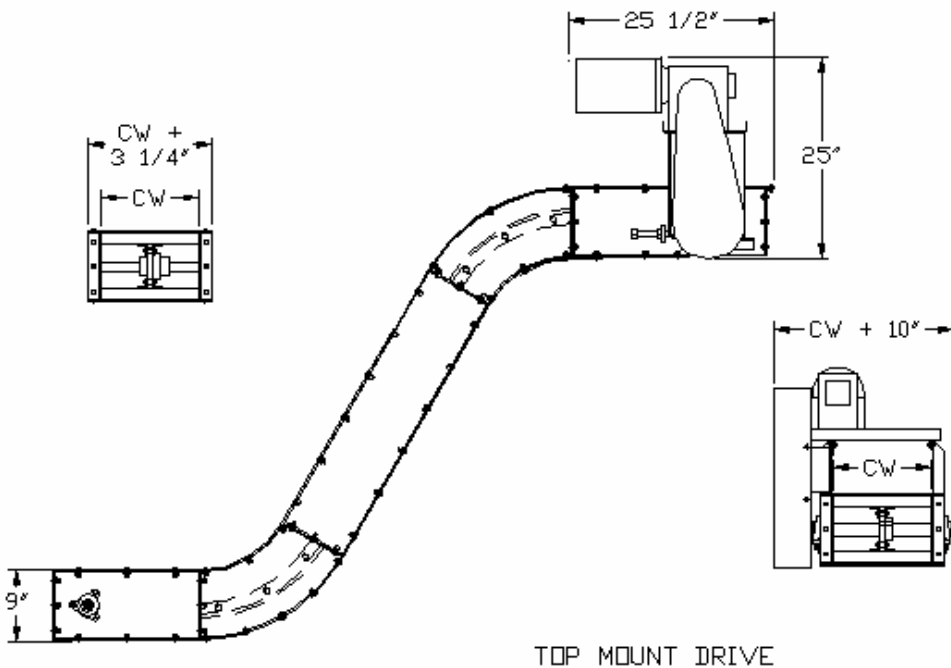
Frame: 8-5/8" Deep x 10 Gauge

Bearings: Grease Sealed

Sprockets: 12 Tooth, 3.854" Pitch Diameter x 1-3/16"

Belt: 2" Pitch with replaceable 1 ½" high UHMW drag flights on 12" centers; Unique, single-strand chain design

CHAIN WIDTH:	6"	8"	10"	12"
FRAME WIDTH:	9 ¼"	11 ¼"	13 ¼"	15 ¼"



SIDE MOUNT DRIVE